

Fiordland Trails Trust

An opportunity to invest in
people and place



fiordland
trails
trust

www.fiordlandtrails.nz

Building more than trails

Investing in connection, community, and the future

Since 2007, the Fiordland Trails Trust has worked tirelessly to develop, maintain, and promote a growing network of world-class recreational trails in our community.

What began as a small initiative driven by local volunteers has blossomed into one of our region's most celebrated public trails – the Lake2Lake Trail – and a burgeoning trail network that contributes significantly and positively to our social fabric, community well-being, and local economy.

As we look to the future, we are reaching out to our community and seeking financial contributions to support the following high-impact projects:

If funding is raised, we can construct the trail to Eweburn Bridge by Autumn 2026

- From Sinclair Road to Eweburn Bridge (estimated costs \$350,000)
- Construction of the Eweburn Bridge (estimated costs \$90,000)

If funding is raised, we can complete the Lake2Lake Trail, Summer to Autumn 2026

- Through construction of Leg 5 from Balloon Loop Road to Supply Bay Road (estimated costs \$550,000).
- This critical link will remove the current requirement for trail users to share the State Highway and will deliver a continuous, safe, and scenic 30km off-road experience from Te Anau to Manapouri.

Project cost and immediate funding

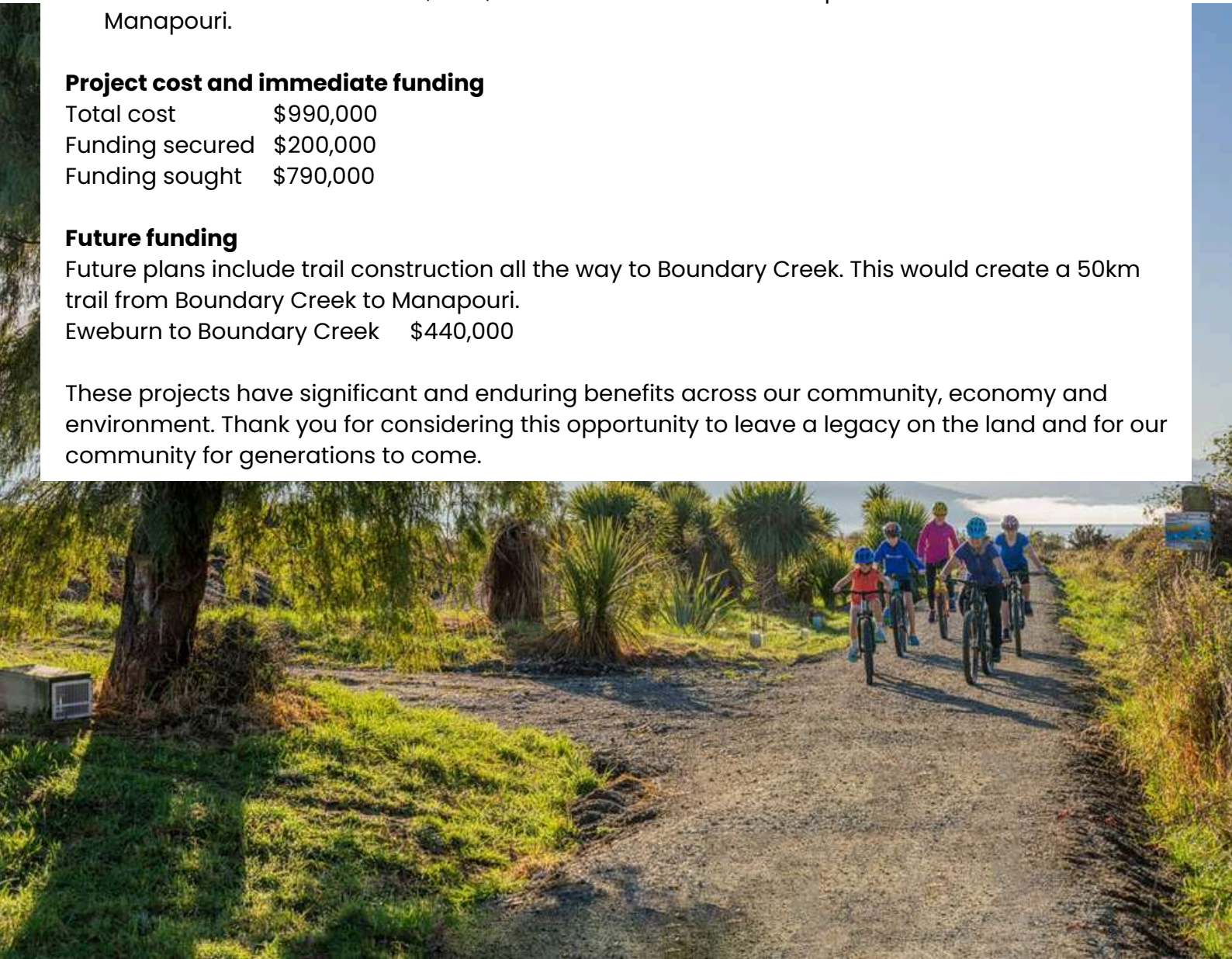
Total cost	\$990,000
Funding secured	\$200,000
Funding sought	\$790,000

Future funding

Future plans include trail construction all the way to Boundary Creek. This would create a 50km trail from Boundary Creek to Manapouri.

Eweburn to Boundary Creek \$440,000

These projects have significant and enduring benefits across our community, economy and environment. Thank you for considering this opportunity to leave a legacy on the land and for our community for generations to come.

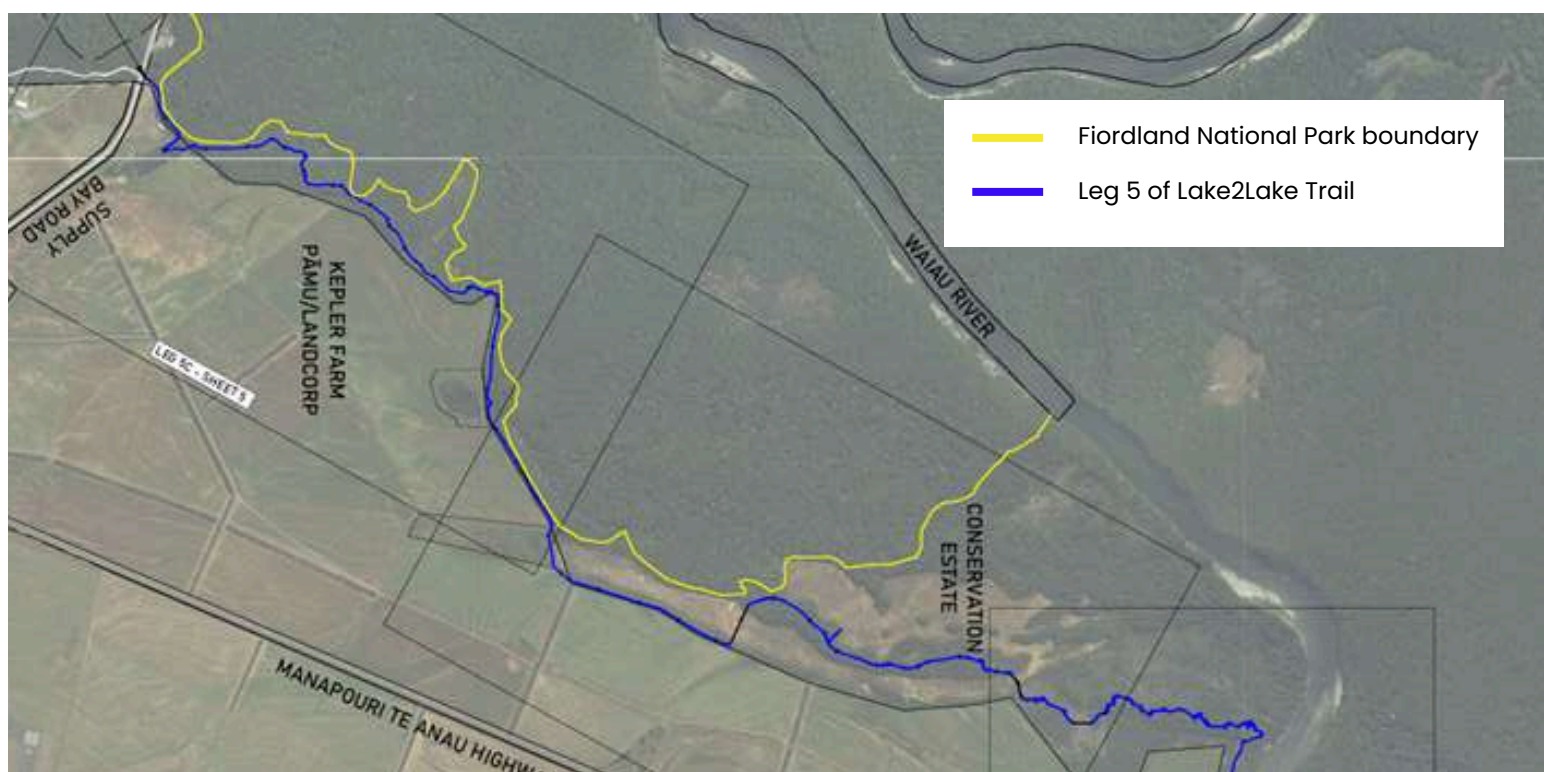


Where we're going - and when

Our long-term goal is to complete the trail to Te Anau Downs, creating an iconic, 63km Great Ride-quality experience. In the short term, our priority is completing the Lake2Lake Trail and to connect the trail from Sinclair Road to the to-be-constructed Eweburn Bridge - and eventually Boundary Creek. This will deliver a unique, safe, and sustainable trail that enhances Te Anau's position as a premier global destination for nature-based adventure. Below is an outline of the next progression, from Sinclair Road to the Eweburn Bridge.



We also know completing the Lake2Lake Trail, connecting Balloon Loop to Supply Bay Road and removing the need for users to travel on the State Highway, will elevate this trail, providing immense potential for our local community and economy. Consents are now secured, and we plan to commence construction as soon as funding is secured.



The journey so far... milestones to date

2007 **FTT established**

Fiordland Trails Trust established, with a vision of creating and building a world class off-road, multi-use trail network in Fiordland



2015 -2018 **Lake2Lake Trail constructed**

Lake2Lake Trail from Te Anau to Manapouri constructed over three years (4km remaining on road), creating a premier and accessible recreational experience and attracting visitors and locals alike.



2020 **Upukerora Loop constructed**

The trail is extended north of Te Anau, creating the Upukerora Loop, including a new trail bridge over the Upukerora River.

2021 **Jobs for Nature project**

The Jobs for Nature project saw close to 20,000 native trees planted, alongside an extensive weed and predator control programme and 6km of trail extension.

2023 **Impact assessment**

An Impact Assessment is carried out on the trail network that shows the estimated direct economic contribution of the Lake2Lake Trail in one year is \$3.025 million.

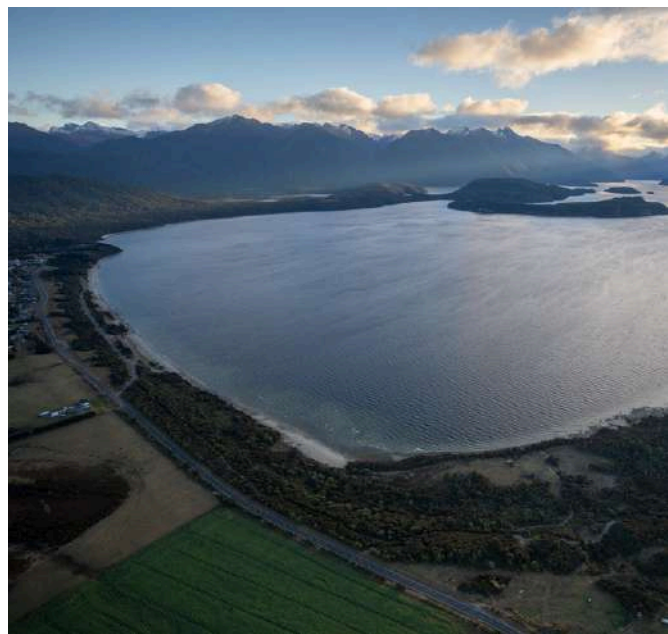


2024 **Trail extension**

The trail is extended further north to Patience Bay. Resource consent is in place for the trail to extend all the way to Boundary Creek.

2025 **Consents gained and record trail numbers**

Approved resource consent for trail construction to complete the Lake2Lake off road trail from Supply Bay to Balloon Loop. Record trail numbers are recorded across both the Lake2Lake Trail and trails north.





Direct and tangible benefits for our community, now and for generations to come

The trail network in Te Anau delivers significant value to our local community and holds incredible potential for future growth. It plays a vital role in establishing Te Anau as a premier global destination for outdoor adventure and nature-based tourism.

Economic benefits to the community

An independent 2023 report confirmed the trail's substantial regional contribution, which continues to grow as usage rises.

- \$3.025 million: Annual economic impact of the Lake2Lake Trail
- 5,148 visitors: Directly attributed to trail use
- 10,000+ nights: Stayed by trail users
- \$1.8 million: Visitor spending (avg. \$349 per visit)
- \$245,000: From trail development and maintenance



Community and recreation

The trail offers a safe, free, and accessible space for all ages and abilities.

- Promotes physical activity and mental wellbeing
- Used by schools for outdoor education
- Hosts community cycling groups and events
- Supports large-scale recreational and competitive events
- Accessible for range of users



Environmental stewardship

Fiordland Trails Trust integrates ecological care with recreation.

- Active in weed, pest, and predator control
- Thousands of native trees planted
- Promotes low-carbon tourism and commuting
- Deepens users' connection to nature

Socioeconomic impact

- Trail design supports mobility scooters, prams, and bike trailers
- Connects local businesses with visitors
- Brings increased foot traffic to local hospitality and retail sectors



Funding and sponsorship tiers

PLATINUM \$40,000+

- Prominent logo placement on main trail signs
- Logo on home page of website
- Featured sponsor profile on website and newsletter (spotlight article)
- Social media & website story
- Invitation to speak at milestone events/openings
- Recognition on printed maps/brochures.
- Annual "impact report" (trail usage, community benefits, sponsor visibility)
- Opportunities to host a stall or presence at trail events
- Opportunities for volunteer/team building days for staff (planting, clean-up, maintenance)
- Digital badge for use on own website/socials
- Certificate of appreciation
- Up to four free entries to our annual Half Marathon/10k event

GOLD \$20,000+

- Smaller logo placement on main trail signs
- Logo on Supporters page of website
- Social media recognition
- Invitation to attend milestone events/openings
- Featured profile in newsletter (spotlight article)
- Mention in newsletters ongoing
- Recognition on printed maps/brochures.
- Annual impact highlights
- Opportunities to host a stall or presence at trail events
- Opportunities for volunteer/team building days for staff
- Digital badge for own use
- Certificate of appreciation
- Discounted entries to Half Marathon/10k event

SILVER \$7,500+

- Logo on Supporters page of website.
- Social media recognition
- Mention in newsletter
- Invitation to attend milestone events/openings
- Digital badge for use on own website/socials
- Certificate of appreciation

BRONZE \$2500+

- Name recognition on Supporters page of website
- Mention in newsletter
- Group social media recognition.
- Trust communications and updates (general circulation)
- Certificate of appreciation

Recognising your support

We value all contributions and are committed to acknowledging your generosity in meaningful and visible ways. Recognition is generally tailored to the level of donation and/or sponsorship, and may include:

Brand visibility

Logo placement on promotional materials, posters, flyers, signage

Logo and/or acknowledgement on our website and social media

Inclusion in newsletters and email campaigns

Media release mentions where appropriate

.....

Event and community recognition

Acknowledgement at our AGM

Recognition on permanent or semi-permanent assets (eg. plaques, signage, trail markers, branded gear)

Highlight stories showing the impact of sponsorship

.....

Legacy and goodwill

Invitations to openings or milestone events

Potential to get involved with FTT fundraising events throughout the year

Complimentary tickets to events


Opportunities to display banners or promotional material at events

Regular updates on Trust activities via our newsletter

.....

These are just some examples of the ways we can and do recognise the support we receive. We are always looking at innovative new ways to do this, and would be happy to discuss any other ideas you may have or ways you would wish your contribution to be acknowledged.





By supporting this project, you are investing in a healthy, vibrant, and sustainable future for Fiordland – one where people of all ages and abilities can experience the region's natural beauty, where local businesses thrive, and where the land itself is protected and celebrated.

We invite you to be part of this legacy.

We would be delighted to meet with you personally to explore how your support could make a profound and lasting difference for our community and environment.

This is impact that lasts – for both people and place.

Ways to make a donation

Online banking:

03-1749-0049791-000 – please email
admin@fiordlandtrails.nz so we can
acknowledge your donation and issue a receipt

On our website:

Visit www.fiordlandtrails.nz/support-the-trails

If you would prefer to discuss any potential support, please get in touch – we would love to chat with you!

Email our Trust Manager Clare Ngakai at
admin@fiordlandtrails.nz or phone 027 2000 473

fiordland
trails
trust

Thank you!